

Pop-up Day Cruise to Hempstead Harbor (With Steak and Chicken!)

The CIYC Cruising Committee is sponsoring a hastily planned (i.e. last minute) pop-up cruise on Aug 25 to a selected anchorage in Hempstead Harbor. Here's the plan:

1. Raft-up at a selected anchorage which is just north of the breakwater at the entrance to Glen Cove.

We will anchor and raft up by 4:00 and hang out for two hours or so. Please be sure to bring fenders and mooring lines for rafting. BBQs, food, and drink, of course, are strongly encouraged. **Also, the cruising committee will supply steak for grilling** (Did he say free steak?!) We will head back to City Island around 6:00 so that people don't have to sail in the dark unless you like that kind of thing.

Click the links below for charts with the route marked. The enlarged chart shows the location of the anchorage. Also, click the links below for photos taken from the anchorage site. The table below shows the waypoints and distances in each leg of the route.

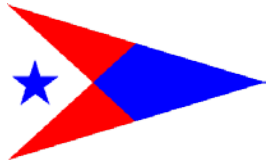
We'll hope for good weather, but plans may have to be modified based on the weather. The anchorage is in a protected area, but if the wind is blowing from the NE, we may need to call an audible and anchor on the south side of the breakwater.

It should be a fun day. We hope that you will join us. On shore, there is a park with hiking trails and a swimming beach nearby.

Waypoint	Lat (hh°mm.mm)	Long (hhh°mm.mm)	Course (M°)	Distance to Next (nm)	Comment
LIS R46A	40°49.45'N	073°47.17'W			EBYRA L
Ht Isl Lt	40°50.64'N	073°45.97'W	050°	1.5	
LIS 44A Exc Lt	40°52.38'N	073°44.25'W	050°	2.17	
LIS G23 Hmpstd	40°52.91'N	073°43.00'W	074°	1.08	
Hmstd North Raft-Up Point	40°52.11'N	073°39.46'W	120°	2.8	CIYC Primary Raft-Up Site
	Cumulative Distance (nm)			7.55	
Alternate Raft- Up South of Jetty	40°51.60N	073°39.48'W			Alternate (secondary) raft-up site in case of wind/wave

					from the north
--	--	--	--	--	----------------

Please use the form below to sign up for the pop-up day cruise.



**City Island Yacht Club (CIYC)
Day Cruise to Hempstead Harbor
La 40°52.11'N and Lo 073°39.46'W
DATE: Sunday, August 25, 2018
Boat sign-up**

August 25, 2018, staying for dinner, before departing back to CIYC.

1. The fleet will leave CIYC the morning of August 25th at Hempstead Harbor by 3:30 pm.
2. Fleet communications will be on VHF channel 72.

Make your reservation (if you want steaks) by 8/23/2018:

Name of Boat: _____

Captain:

Length: _____

Number of Crew: _____

Mobile Phone# _____ **Email Address:** _____

MMSI# (if equipped with DSC VHF): _____

How many for steak dinner orders from your boat? _____

Questions? Call or email Roger Landau: 973-454-9669 cell rogerlandau2@gmail.com

Thanks

CIYC Cruising Committee



Figure 1 Hempstead Harbor Route Chart

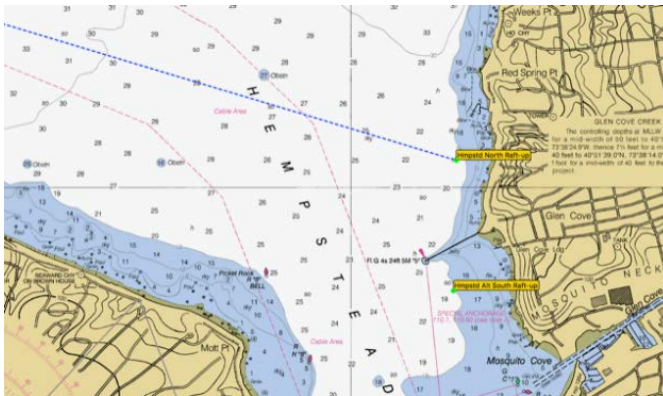


Figure 3 Hempstead Harbor Alternate Raft-up Points



Figure 4 Hempstead Harbor Breakwater



Figure 5 Hempstead Harbor Raft-up Location